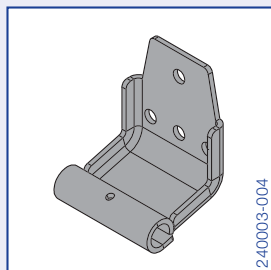
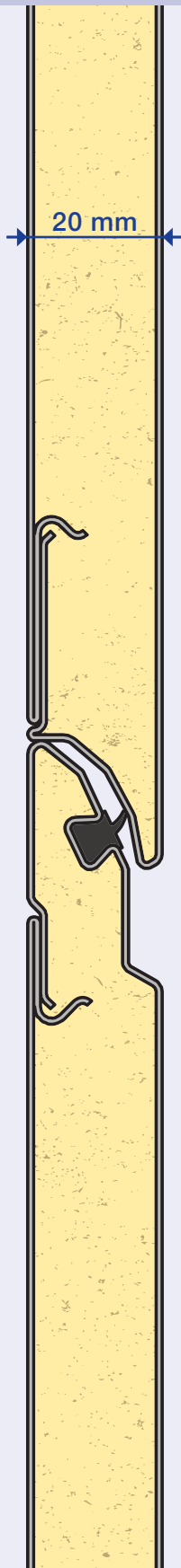


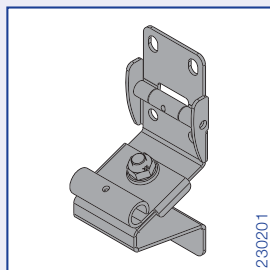
**NEW!**

# Hardware components for 20 mm **EPCO** panels



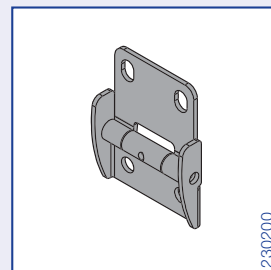
240003-004

Bottom bracket



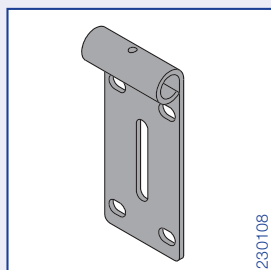
230201

Side hinge



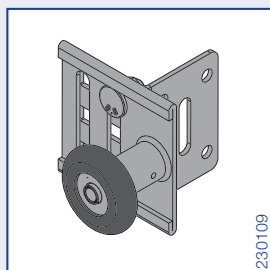
230200

Intermediate hinge



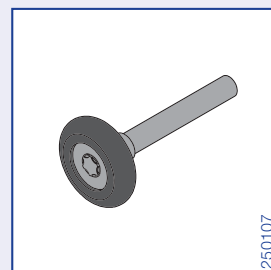
230108

Top roller carrier



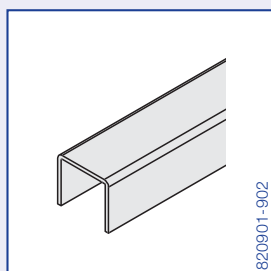
230109

Top roller



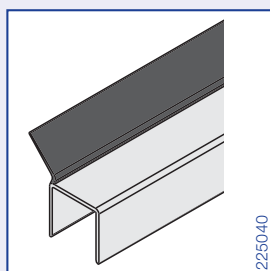
250107

Roller



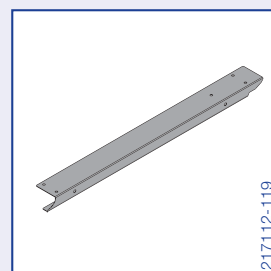
820901-902

Top profile



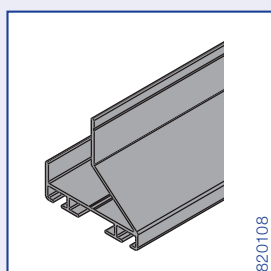
225040

Top profile with seal



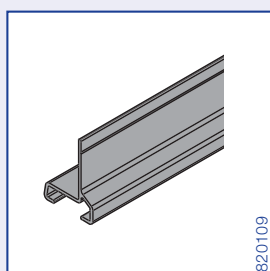
2171 12- 119

End cap



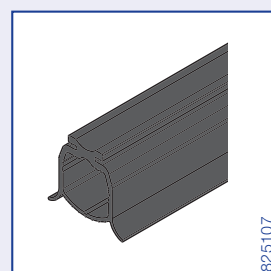
820108

Bottom profile



820109

Bottom profile



825107

Bottom seal



**DOCO International B.V.**

Nusterweg 96  
6136 KV Sittard  
The Netherlands  
Phone +31 464200666  
Fax +31 464526894  
info@doco-international.com

**DOCO International  
Southern Europe S.L.U.**

Avenida Generalitat 55  
P.I. "Can Met Sidru"  
08530 La Garriga - Barcelona  
Spain  
Phone +34 938612825  
Fax +34 938716592  
ventas@doco-international.com

**DOCO International  
Central Europe S.R.O.**

Háj 352  
798 12 Kralice na Hané  
Czech Republic  
Phone +420 582360100  
Fax +420 582360300  
info@doco-international.com

**DOCO International Ltd.**

Unit B3. Elvington Industrial Estate  
Elvington  
York  
YO41 4AR  
United Kingdom  
Phone +44 1904607869  
Fax +44 1904607299  
sales@doco-international.co.uk

**SOMMER Automazioni s.r.l. /  
DOCO Sales Office**

Via della Cooperazione, 105  
38123 Trento Fraz. Mattarello  
Italy  
Phone +39 0461263863  
Fax +39 0461269247  
info@it.sommer.eu

For your Residential  
and Industrial door solutions:  
[www.doco-international.com](http://www.doco-international.com)

A company of the SOMMER Group

