

New

Low Headroom Industrial

Neu

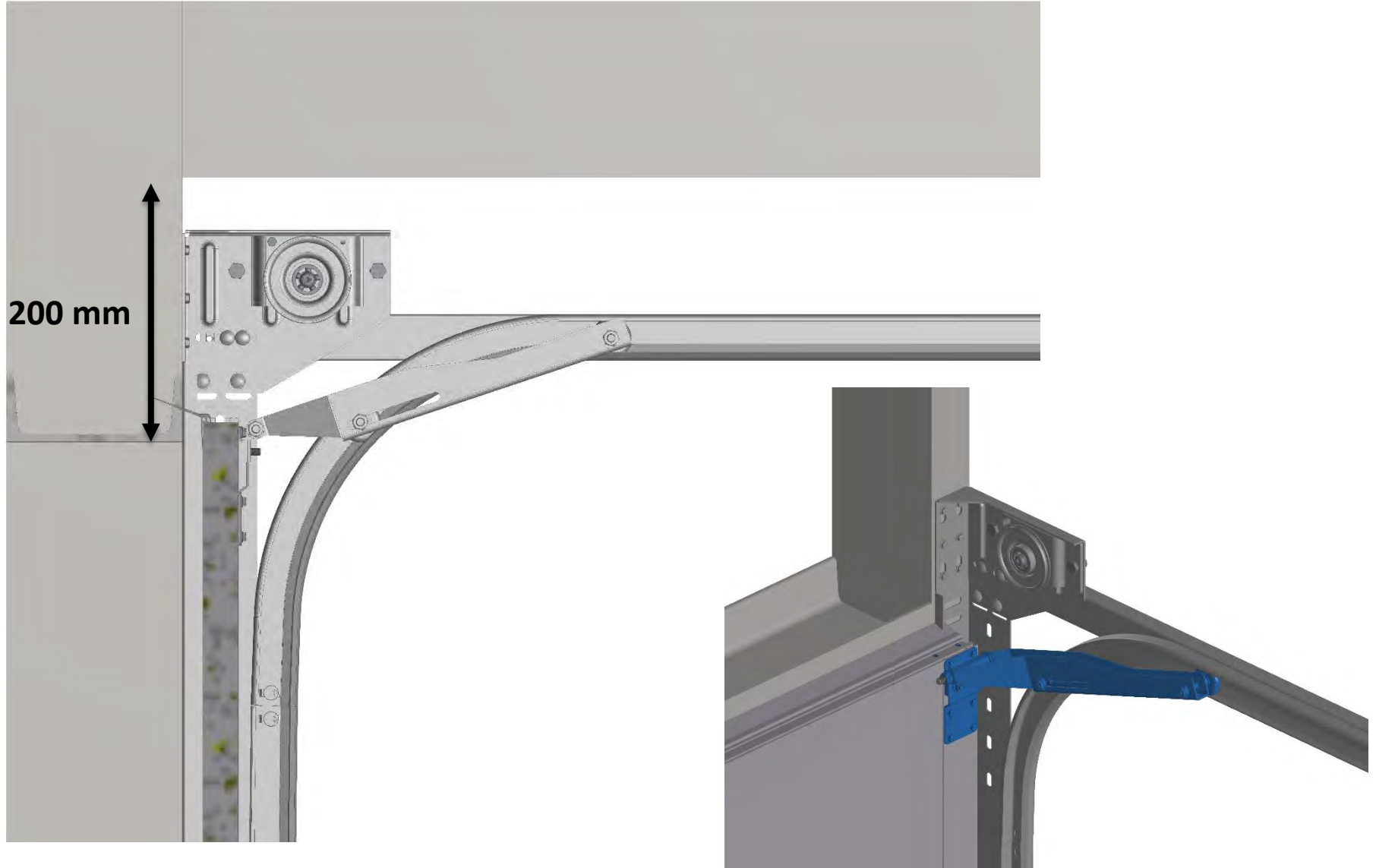
**Niedrigsturzbeschlag
Industrie**

Low Headroom Industrial **Niedrigsturzbeschlag** **Industrie**

High Lights

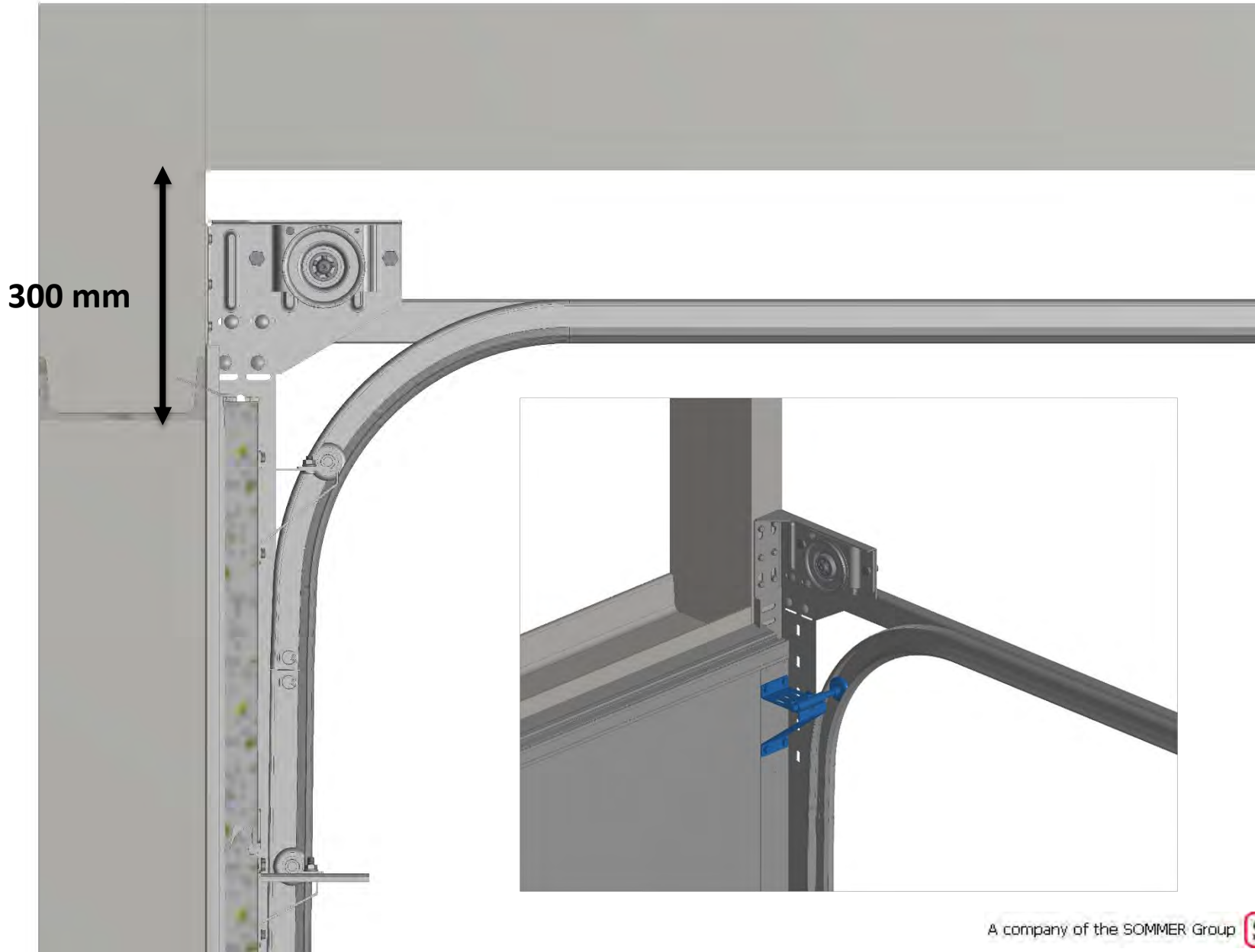
Lintel building in space : 200 mm version

Version 1: Sturz Einbau Höhe: 200 mm



Lintel building in space : 300 mm version

Version 2: Sturz Einbau Höhe: 300 mm





Specifications

Technische Daten

• **Niedrigsturzbeschlag Industrie: Allgemein**

DH + 1100 mm



LHI-Beschlag

Max. Breite = 6,0 mtr*

Max. Höhe = 5,0 mtr

Max. Gewicht = 350 kg

Min. Sturz= 200 mm

Min. Platz bedarf Seite vorne = 105 mm

Min. Platz bedarf Seite hinten = 120 mm**

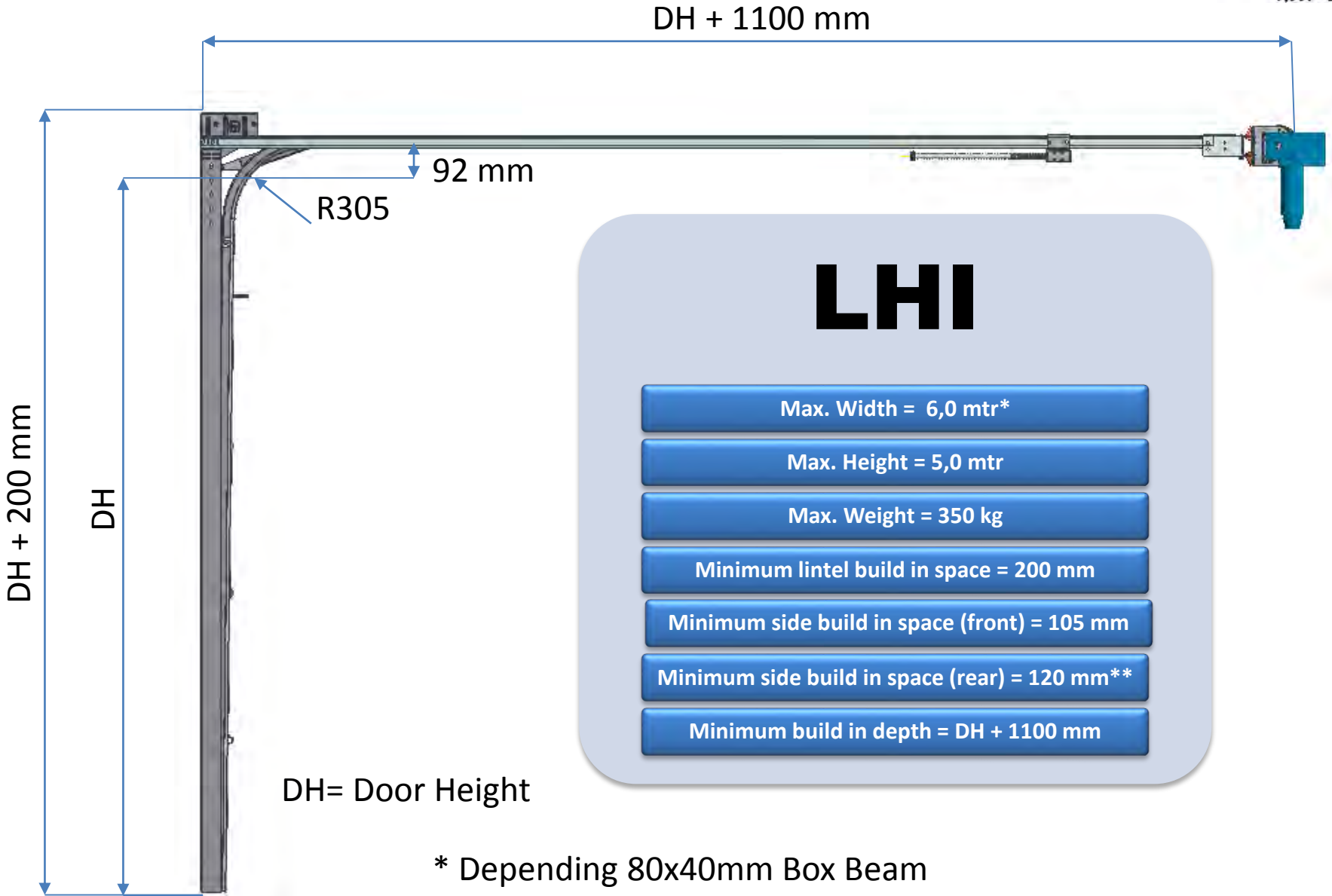
Min. Einbau Tiefe = DH + 1100 mm

DH= Tor Höhe

* Abhängig von länge 80x40mm Stahl Rohr

** Abhängig vom Tor gewicht und position Antrieb

• **Low Headroom Industrial : General**



LHI

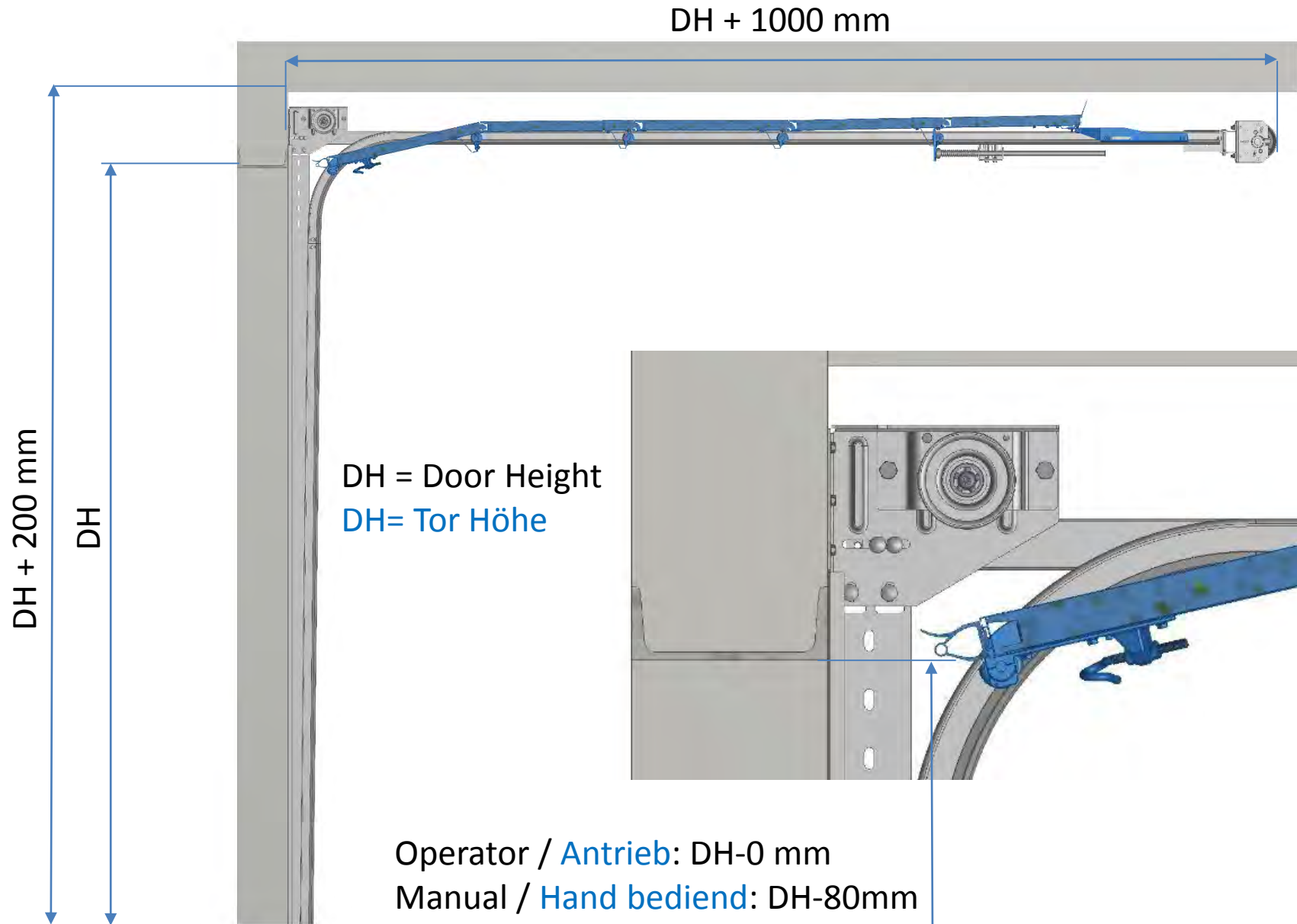
- Max. Width = 6,0 mtr*
- Max. Height = 5,0 mtr
- Max. Weight = 350 kg
- Minimum lintel build in space = 200 mm
- Minimum side build in space (front) = 105 mm
- Minimum side build in space (rear) = 120 mm**
- Minimum build in depth = DH + 1100 mm

DH= Door Height

* Depending 80x40mm Box Beam

** Depends on Door weight and operator position

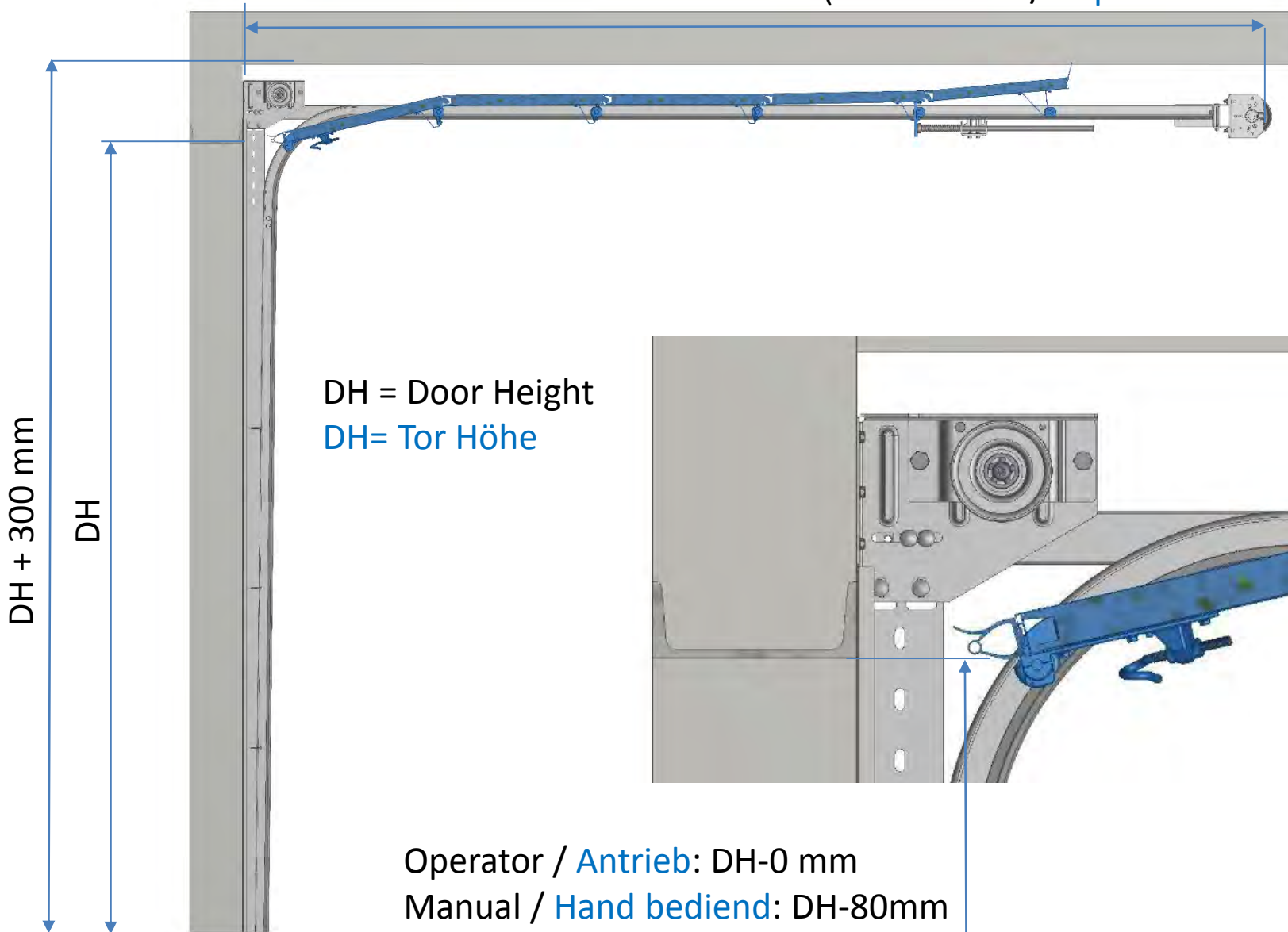
- **Low Headroom Industrial: type 200mm**
- **Version 1: Sturz Einbau Höhe: 200 mm**



• **Low Headroom Industrial: type 300mm**

• **Version 2: Sturz Einbau Höhe: 300 mm**

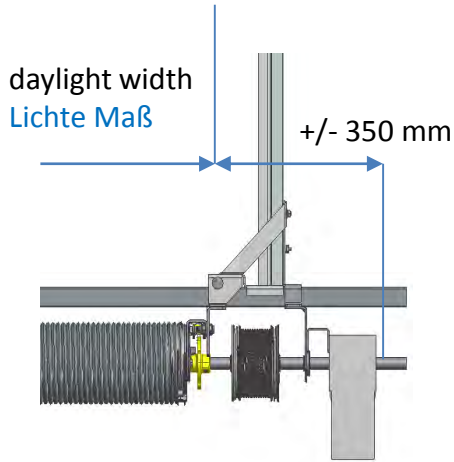
min. DH + 700 mm (recommend /empfohlen 1000mm)



DH = Door Height
DH= Tor Höhe

Operator / **Antrieb**: DH-0 mm
Manual / **Hand bediend**: DH-80mm

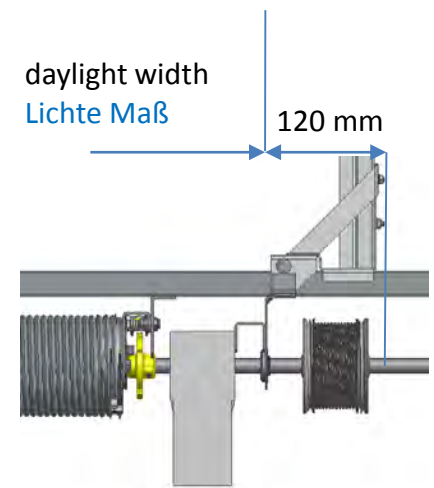
• **Low Headroom Industrial**



Heavy doors / **Schwere Tore** >226 kg



Light doors / **Leichte Tore** <225 kg



CE - ITTr



REPORT
 Issued by notified body No. 0402

Handled by: Department
 Susanne Hansson, Certification
 +4610-516 5152, susanne.hansson@sp.se

0402 – CPR – 570401

Date: 2015-11-11 Reference report number: 0402-CPR-570401 Page: 1 (7)
 Revision: 1



DOCO International B.V.
 Nusterweg 96
 6136 KV Sittard
 The Netherlands

Summary of Initial Type Testing Reports for Industrial door

SP Technical Research Institute of Sweden has as Notified Body no. 0402, performed Initial type-testing of the products mentioned below, according to the requirements in the harmonized standard **EN 13241-1:2003+A1:2011 Industrial, commercial and garage doors and gates – Product standard - Part 1: Products without fire resistance or smoke control characteristics.**

This report may be used as support for a Declaration of Performance in accordance with the Regulation (EU) No 305/2011 of the European parliament and of the council, CPR (Construction Products Regulation).

Product name and description

Industrial Door name /type	DOCO New ST-HL-VL , sectional overhead door
Day-light, maximum	Width 8500 mm, height 7000 mm (maximum area 48 m ²)
Weight of door	Max. 660 kg (also see chapter 1.5 and 3)
Type of panels	Technopan, Tecsedo, EPCO, Italpannelli, Marcegaglia, Hoesch, Kingspan
Hardware	DOCO New ST-HL-VL SLP, HLP, LHI, HL-LL, VL-LL, VL-Dock, HL-Dock
Balancing system	Torsion springs
Spring break device	DOCO type (see chapter 1.5)
Cable break device	DOCO type (see chapter 1.5)
Machinery / Operator	See chapter 3
Safety edge	See chapter 3
General evaluation report Tracks	LHI, HL-LL, VL-LL, VL-Dock, HL-Dock; 4P00855-02, 2015-10-15

This report is a summary of test and assessment reports and includes also results from type tests performed by other Notified Body/ies. The content of this report may be used as support for an Declaration of Performance in accordance with the CPR. It shall be noted that the client shall specify all the involved Notified Bodies and their numbers in the Declaration of Performance.

SP Technical Research Institute of Sweden

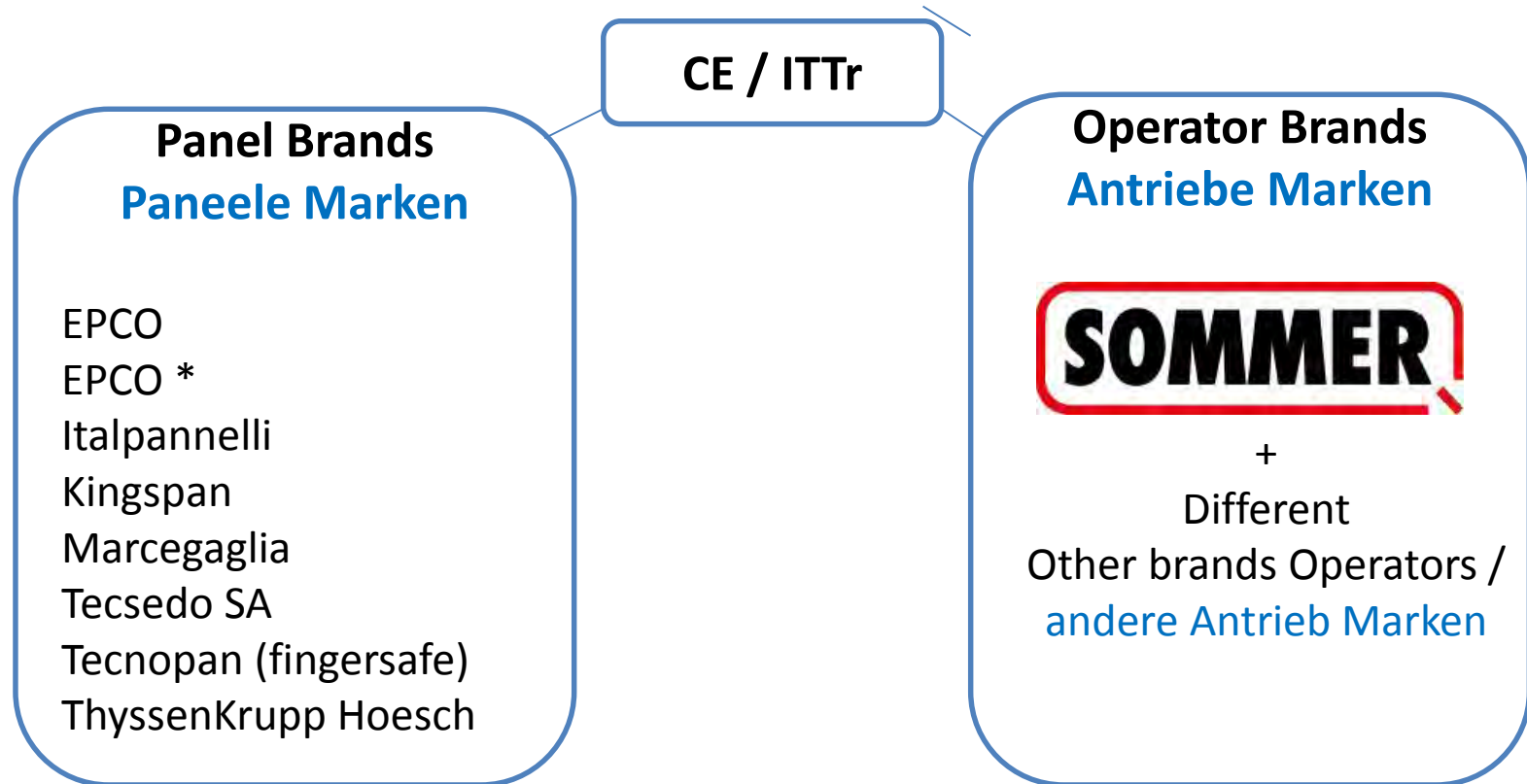
Postal address: Box 857, SE-501 15 Borås, SWEDEN
 Phone / Fax: +46 10-516 50 00 / +46 33-13 55 02
 Registration No: 555464-6874
 E-mail / Internet: info@sp.se, www.sp.se

Swedish Notified Bodies are appointed by SWEDAC, the Swedish Board for Accreditation and Conformity Assessment, under the terms of Swedish legislation. This report may not be reproduced other than in full, except with the prior written approval by SP. This is a digital signed document. 4P00855



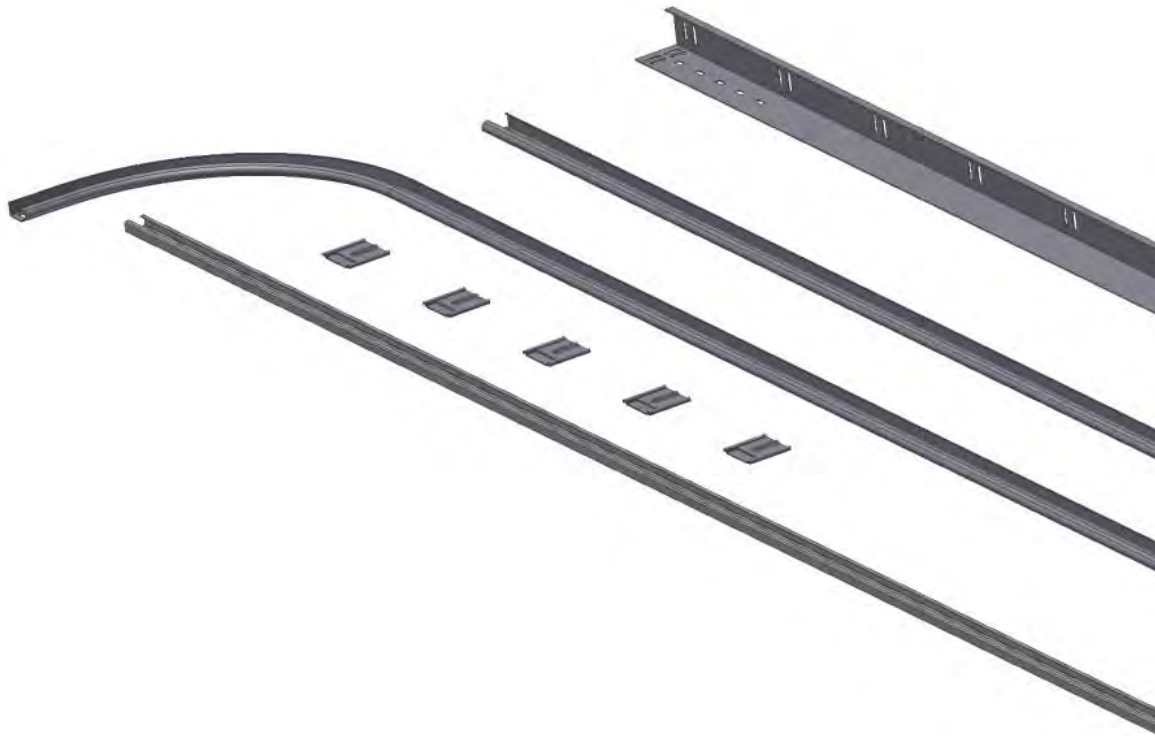
Industrial Door Systems is approved with next Panel and operator brands:

LHI Tore sind Zertifiziert mit nachfolgende Paneele und Antrieb Marken:



* (fingersafe / [Fingersutz](#))

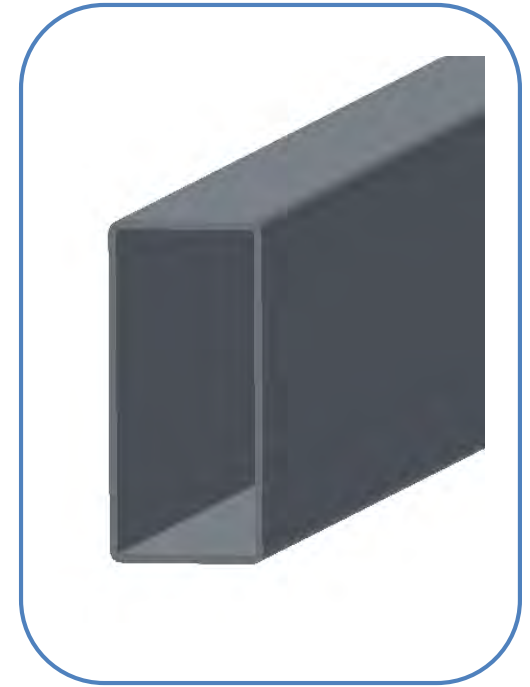
System Components / Systeem Teile



Box beam / **Stahl Rohr 80×40×2** 80×40 Bracket / **Montage Blech**

New Box Beam / Stahl Rohr (220100-xxxx):

- Wall thickness 2 mm / **Wandstärke 2mm**
- Base for mounting / **Basis für montage:**
 - Spring break devices / **Federbruchsicherung**
 - Bearing plates / **Lager Bleche**
 - Outside zinc plated / **Außenseite Verzinkt**



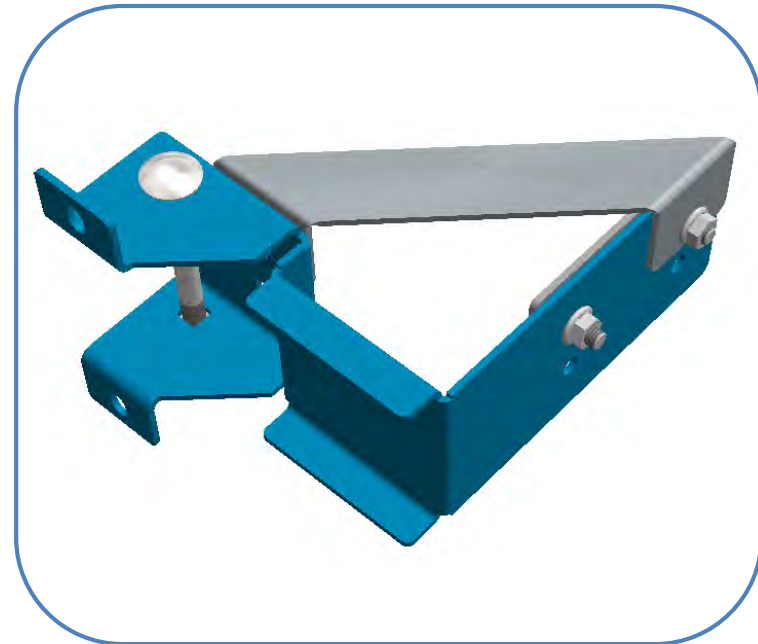
New 80×40 Bracket / Montage Blech (235020):

- Mounting bracket for/ **Montage Blech für:**
 - Centre consoles / **Mitte Konsole**
 - Bearing plates or SBD / **Lager Bleche oder Federbruchsicherung**



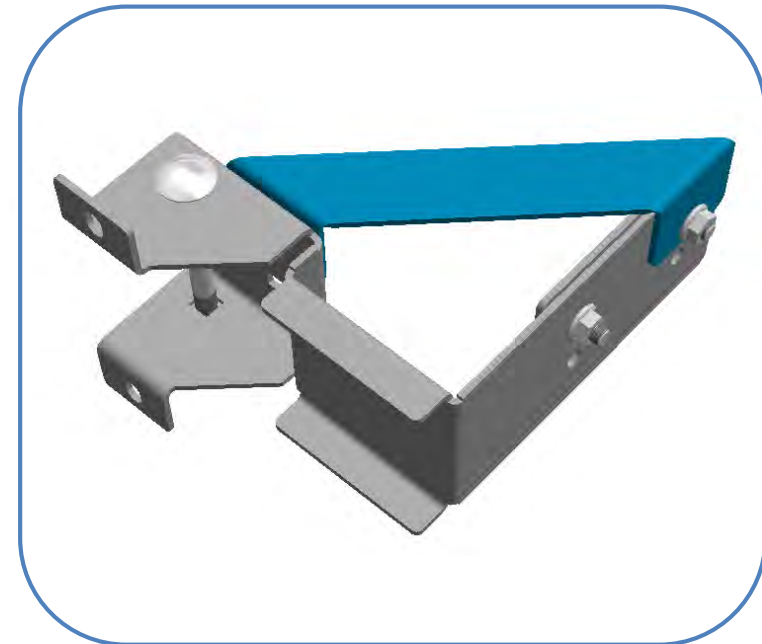
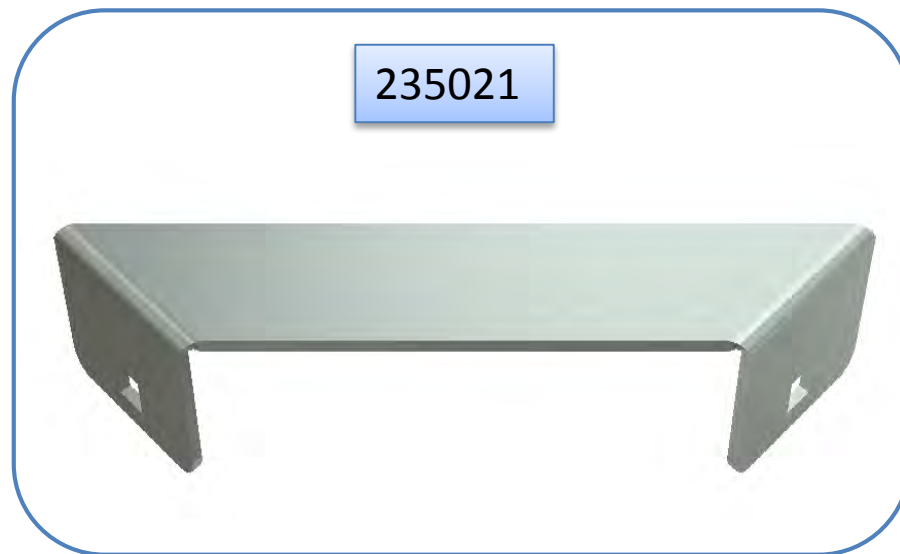
LHI rear bracket (235019):

- Easy connects box beam 220100 with C-rail 220020
- Einfache Verbindung zwischen Stahl Rohr und C-Schiene
- Stable design / Stabiles Design
- Integrated mount for spring brake device / Direkt Montage Federbruchsicherung
- Symmetric part / Links und rechts baugleich



New LHI alignment profile/ Ausgleich Profil (235021):

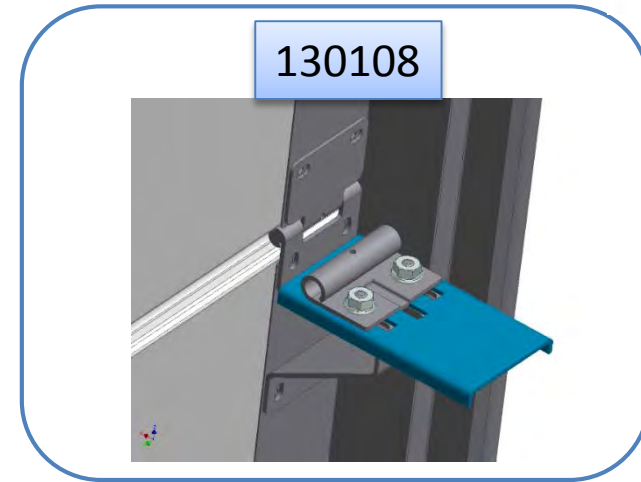
- Increased stability / Stabil
- Easy 90° horizontal rail fixation / Einfach 90° Ausgleich
- Symmetric part / Links und rechts baugleich



LHI Spring bumper Plate / Federpuffer blech

LHI spring bumper plate / Federpuffer Blech (130108):

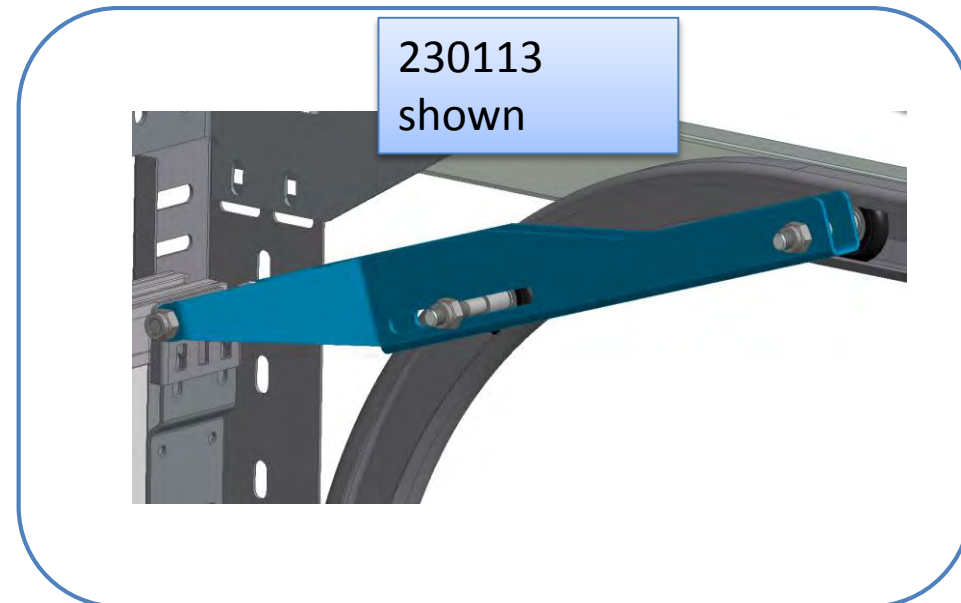
- Fits on all side hinges / past auf alle Seitenscharniere



Double Top Roller / Doppelter obere Laufrolle

230113 (right / Rechts) / 230114 (left / Links)

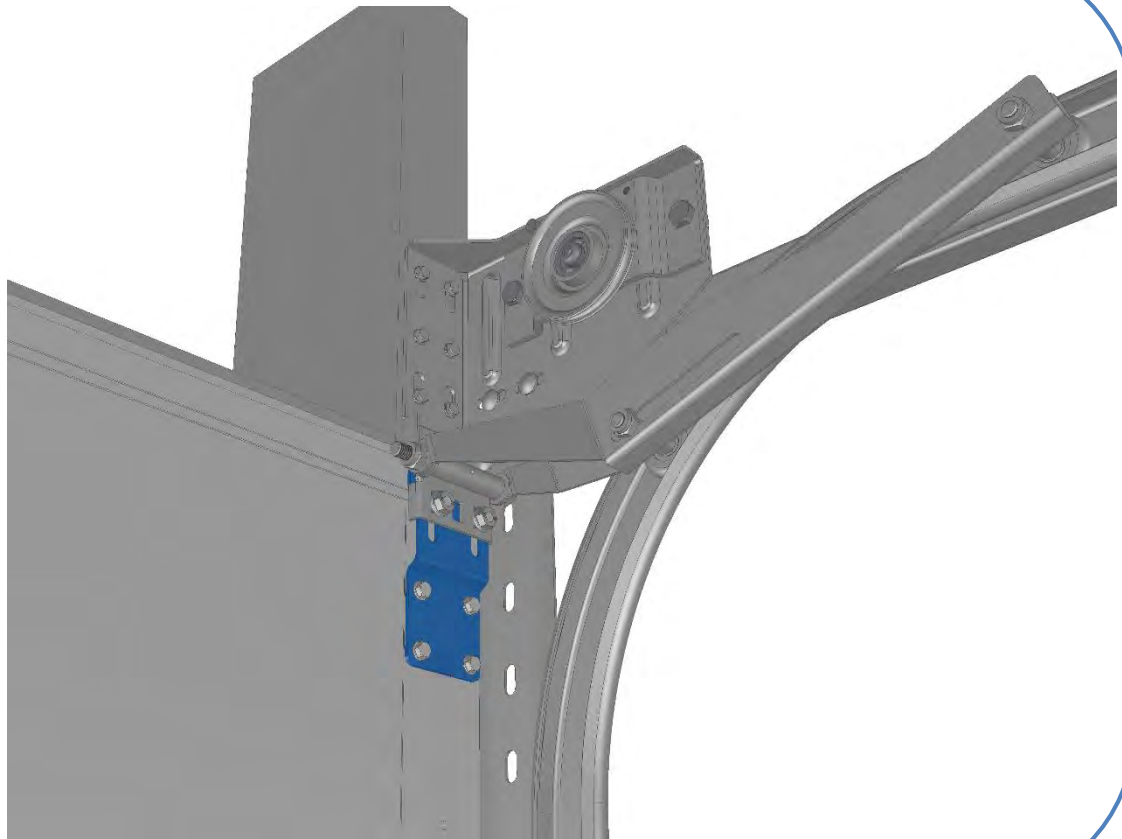
- Closes the top panel / Schließt Top Paneele
- Adjustable roller position / Einstellbar position Laufrolle
- For 200 mm Version / Für 200mm Version



Top roller bracket / Laufrolle Halter

Top roller carrier bracket / Laufrolle (230115):

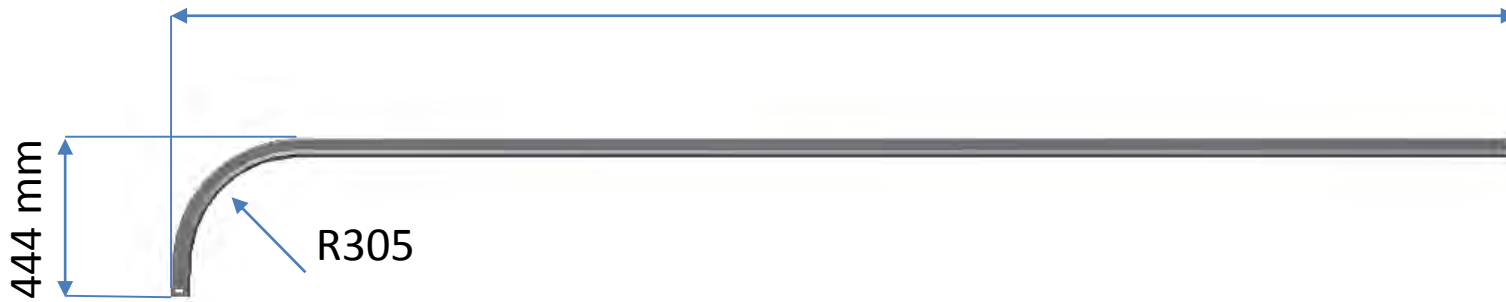
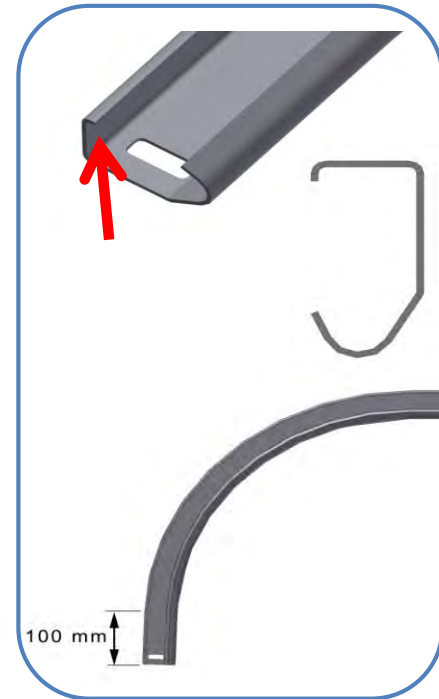
- Adjustable connection between panel and top roller carrier bracket (230113-230114)
- Einstellbare Verbindung zwischen Paneele und doppelter Laufrolle Halter (230113-230114)



R305 Curve / Bogen

Part / Teil : 215092-xxxx

- Special for LHI systems Radius R305 / **Spezial für niedrigsturz Tore**
- 1,75 mm thickness / **Wandstärke 1,75mm**
- Integrated safety flange, avoid roller run out. / **Laufrolle kann nicht rauslaufen**

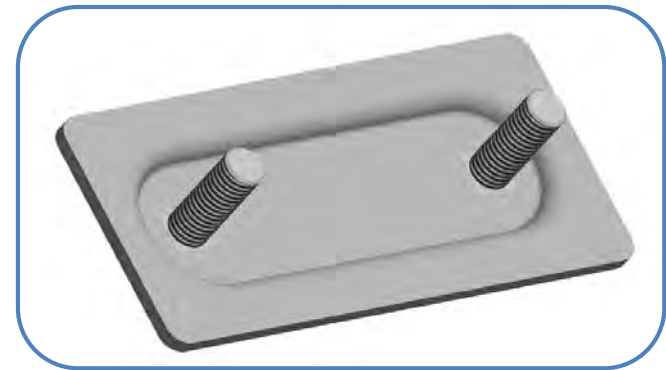


Running change LHI Paroplate / Paroplate

LHI Paroplate (235203):

- Fits in C-rail 220020 / Passt im C-Schiene 220020

What's modified : Height / Höhe ist geändert





door-solutions